

T&C- Ultracote™

Town & Country
INDUSTRIES
Wholesale Aluminum and Building Products

T&C-Ultracote™ sets a new standard in coating performance, surpassing every other option tested under real-world conditions. Unlike traditional coatings that boast impressive lab results but fail in practical applications, T&C-Ultracote™ is rigorously evaluated after installation, ensuring it withstands the toughest environments.

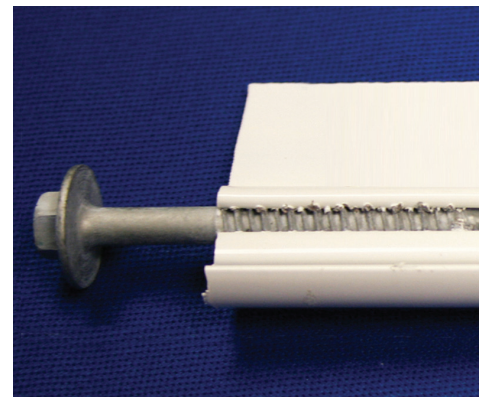
While other screws may seem identical at first glance, it's the superior durability and resilience of the T&C-Ultracote™ coating that sets them apart. Designed to endure harsh conditions and outlast the competition, this innovative coating proves that real performance isn't measured in a lab—it's proven in the field.



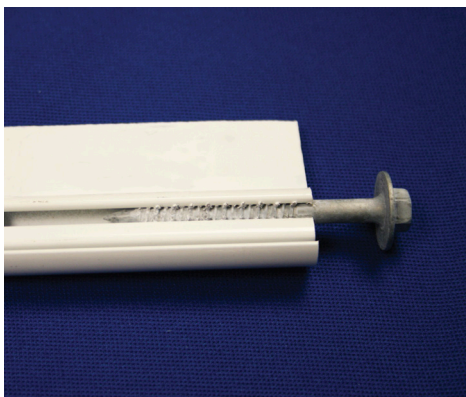
Tired of seeing this on your patio?



In accelerated lab tests, other coatings degrade like this.



T&C-Ultracote™ over carbon steel remains virtually unaffected by corrosion.



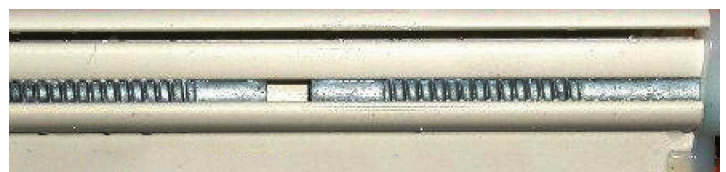
Steel concrete screw with T&C-Ultracote™ installed in concrete, then threaded into aluminum.



Left screw: Leading screw coating for aluminum.
Right screw: 18-8 Stainless steel.



Leading competitor's coating.



Screws coated with T&C-Ultracote™.