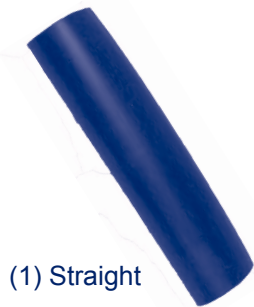


# Marine Products

## LINERS FOR ALL ROD HOLDERS

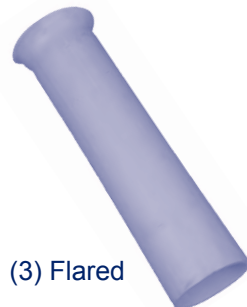
*Made from a special rubber with additives to resist mildew, and inhibitors for protection against ozone and UV.*



(1) Straight



(2) Flared & Tapered



(3) Flared

Ref	Sizing	Rod Holder Usage	P/N
(1)	1-1/2" Pipe	White for Std. 1-1/2" Sch. 40 Pipe	LRH15
(2)	<b>Tulip™</b>	White for 1.65 <b>Tulip™</b>	LRH166FT
(2)	<b>Tulip™</b>	White Flared & Tapered for 1.75 <b>Tulip™</b>	LRH16FT
(1)	2" Tubing	White for 1.5 Rod Holder	LRH175
(1)	2" Tubing	White for 1.5 Gunnel Style Rod Holder	LRH17575
(1)	2" Pipe	White for 1.9 Rod Holder	LRH19
(1)	2" Pipe	Black for 1.0 Rod Holder	LRH19B
(3)	<b>Tulip™</b>	White for 1.9 <b>Tulip™</b> Flared	LRH19F
(3)	<b>Tulip™</b>	Black for 1.9 <b>Tulip™</b> Flared	LRH19BF

## SLEEVE: LEANING POST BACK REST PIPE



Size	P/N
1-5/16" I.D. x 8" Long	SLEV101

- This sleeve fits over 1" NOM pipe & 1-1/2" oval tubing snugly and fits into the inside of a standard 1-1/2" I.D. opening flus mount rod holder.
- Eliminates the gap between the backrest pipe, tubing and the opening of a rod holder.