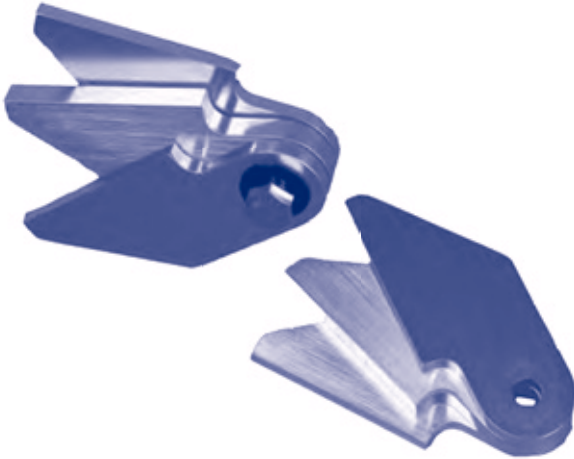


# Marine Products

## HINGE BRACKET SET (Lite Sanded: 1/4" and 3/8" Thick)

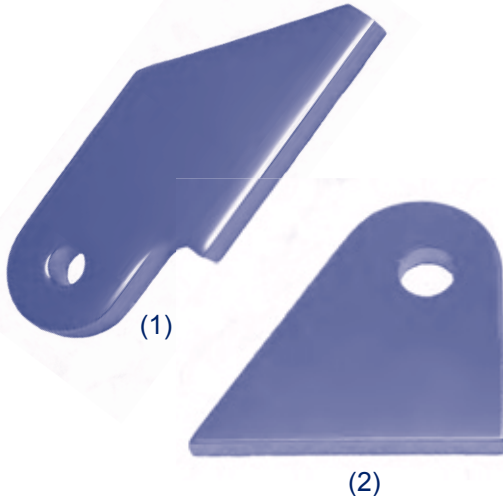


Size	P/N
1.75" x 4.25"	HBSA175X425

- Hole is sized for 3/8" hardware.
- Hinge bracket assembly comes complete with SST hardware and 4 delrin washers.
- 1 set = (2) 1/4" thick and (1) 3/8" thick.

Typical usage: Folding tops and towers.

## HINGE BRACKET & GIN POLE EAR (Polished or Lite Brushed)



Ref	Size	P/N	Finish
(1)	1.75" x 4.25"	HBP175X425	Polished
(2)	2-3/4" x 3"	GPE275X3	Brushed

- Both hinge bracket and gin pole ear are 3/8" thick and are drilled for 3/8" hardware.

Typical usage: Folding tops and towers.

# Marine Products

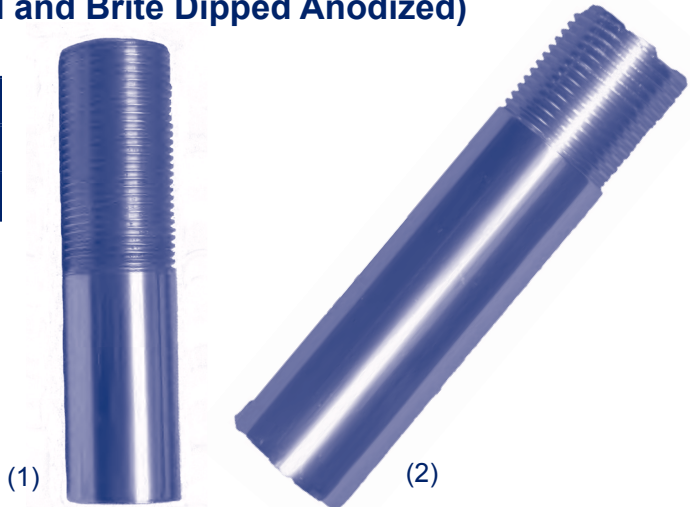
## THREADED ANTENNA MOUNT: 4" LONG (Polished and Brite Dipped Anodized)

Ref	P/N
(1)	TAM101
(2)	TAM102

- Threaded 1-14.

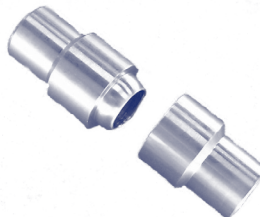
(1) Threaded 2" long.

(2) Threaded 1" long.



## ALIGNMENT PIN SET FOR FOLDING TOWER

Size	P/N
1"	APFT1
1-1/4"	APFT125
1-1/2"	APFT15
2"	APFT2
2-1/2"	APFT25



Hinge bracket set  
EXAMPLE ONLY

- Alignment Pin Male & Female (sold only as a set).
- The only way to perfectly relocate the folding tower each time you fold the upper station.



Please check with your local T&C Metals Branch for updates, as specifications, materials availability, prices and terms of purchase may change without notice.

[www.tc-alum.com](http://www.tc-alum.com)

**T&C Metals**  
Wholesale Metal Products  
A Division of ABC Supply Co., Inc.

A-37